

Work Experience Launch

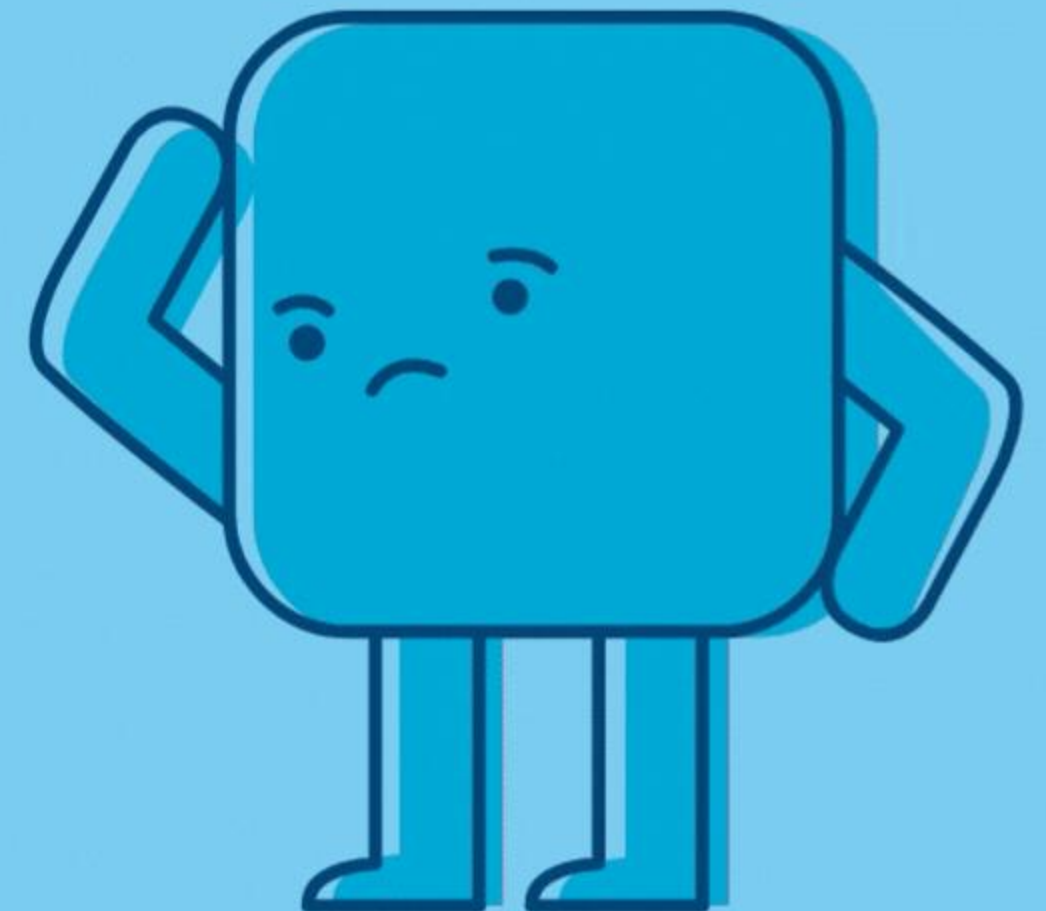


successful futures 
NYBEP education and business in partnership

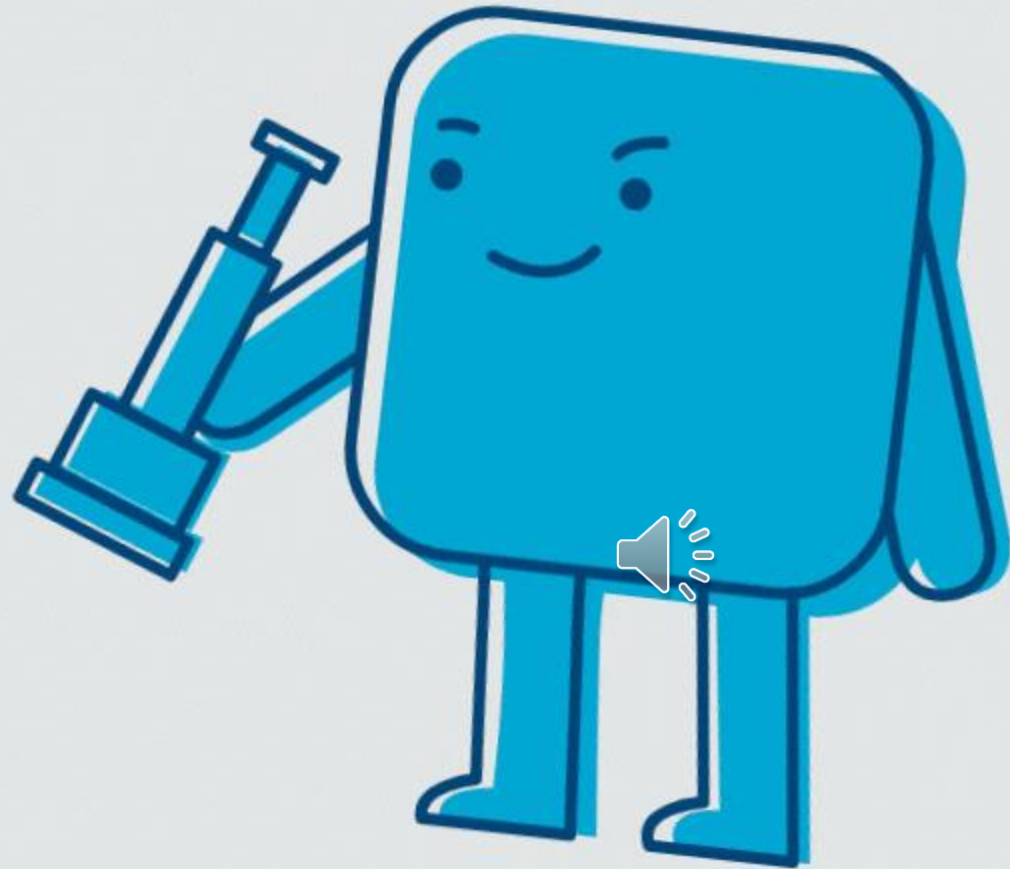
Why is work experience important?



- Provides you with an insight into the world of work.
- Gives you an opportunity to showcase and develop your skills and motivation as an individual.
- Allows you to form an outline of the career path you may choose.
- Enables you to build a foundation relationship with a local employer and make a lasting impression.



Let's see what careers are out there...



Tips for finding your placement

Do your research

Research using the internet, or look on your high street for employers based nearby who might give you a placement.



Don't be shy!

Emailing, telephoning and visiting employers in person. Research the company and find the name of the key person to ask for.

Word of mouth

Talk to friends, parents, family members and enquire if they can help out or support. Everyone knows someone!



Tips for finding your placement



Register

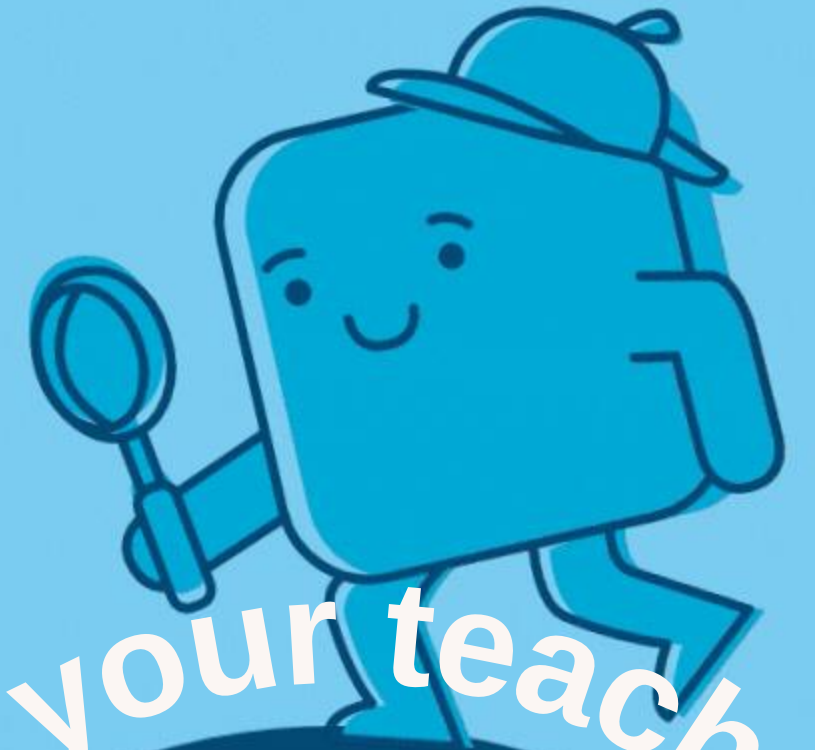
Register on volunteer, apprenticeship and job websites to search for companies and contact details.

Networking

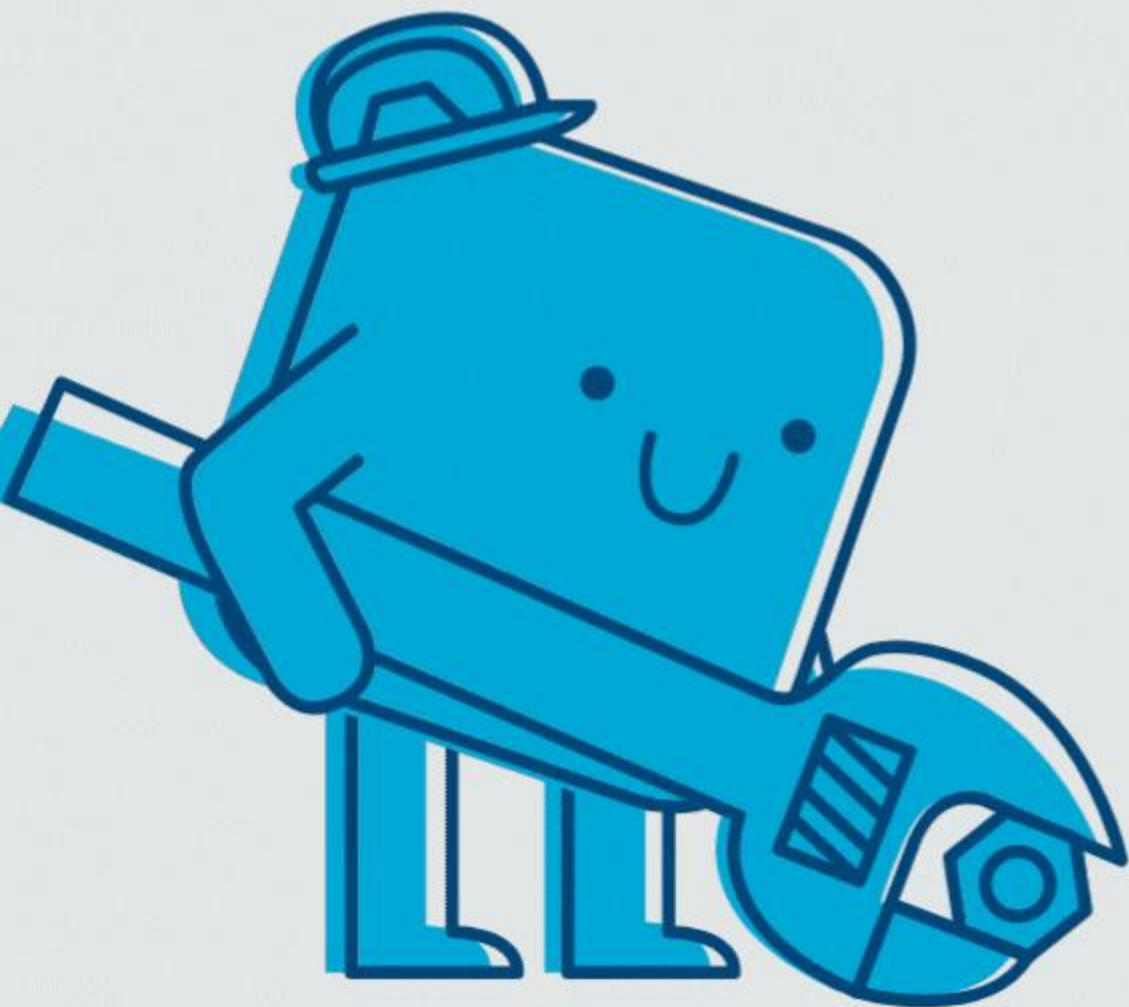
Active networking in person and online using social media sites like Twitter, Facebook and LinkedIn to follow companies.

Ask your teachers

Talk to your School Teachers and ask them if they can think of anyone they might know or may have taken past placements.



Things to consider checklist



- ✓ How will you get there? What will you be doing?
- ✓ Employers Liability Insurance
- ✓ Out of area placements
- ✓ Will you need a preplacement interview?
- ✓ Employers are giving up their time to invest in you!



Key dates to REMEMBER!

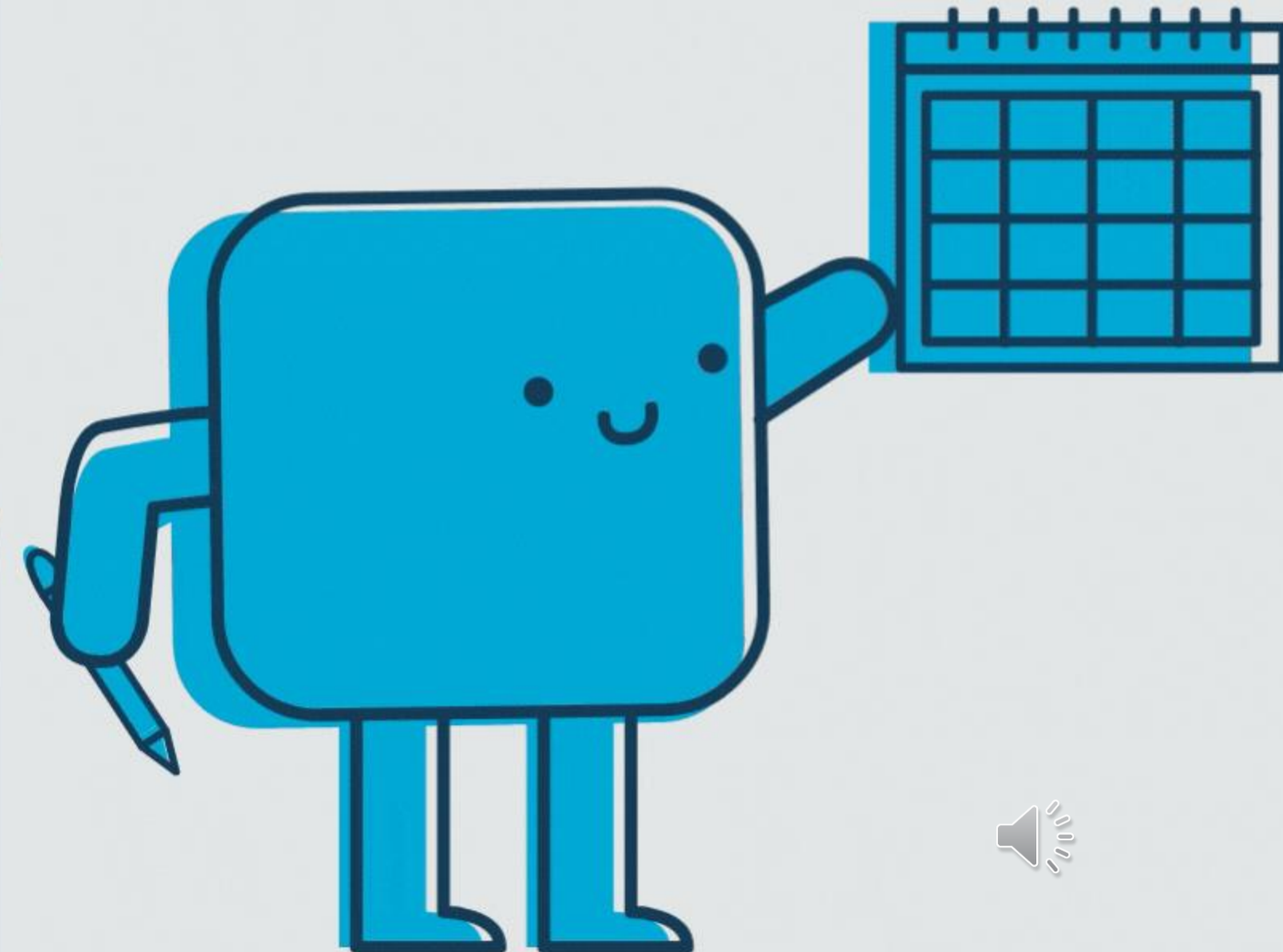


You must have accessed the portal and
have logged in by:

2 weeks after Launch

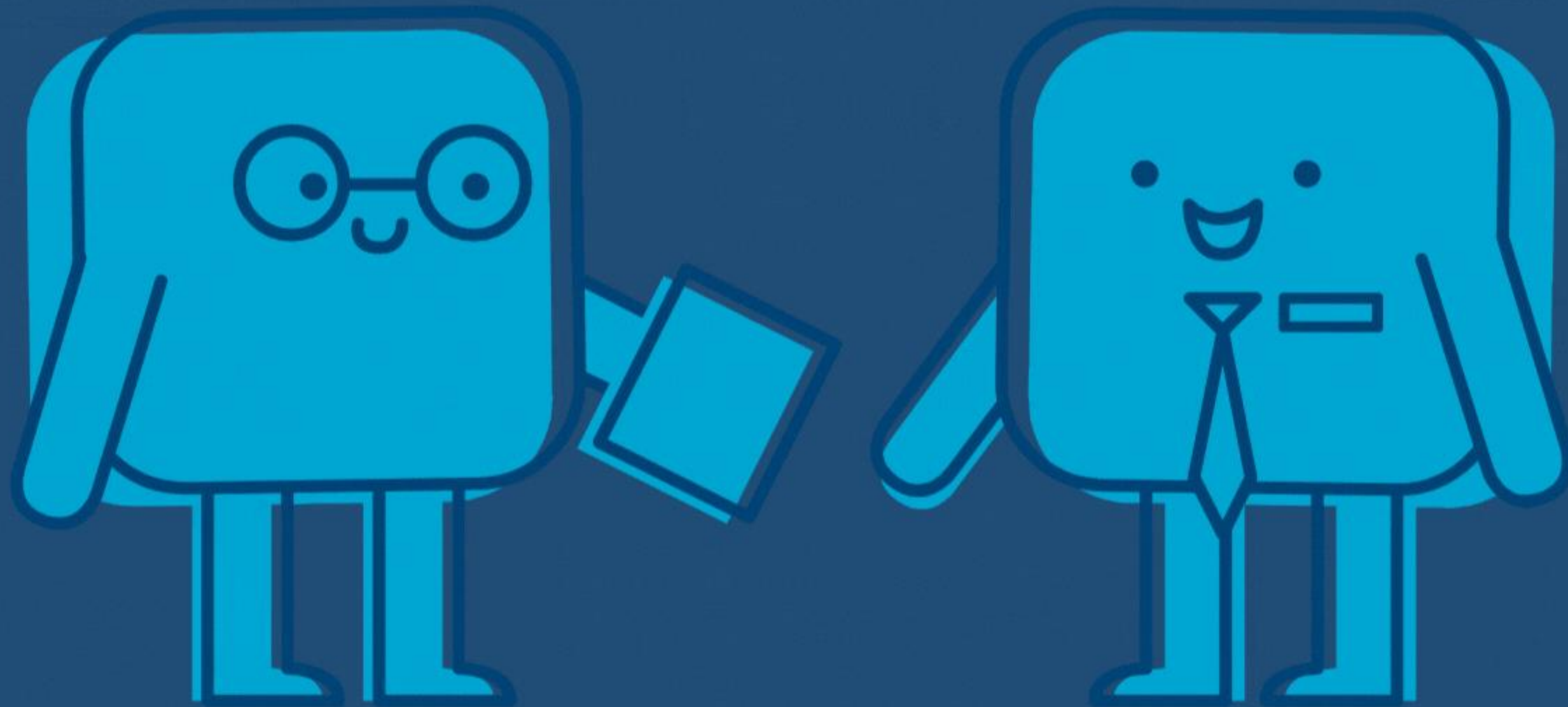
You must have found your own
placement at least 3 months before your
work experience dates which are:

7th July– 11th July 2025





What do I do once I have found my own placement?

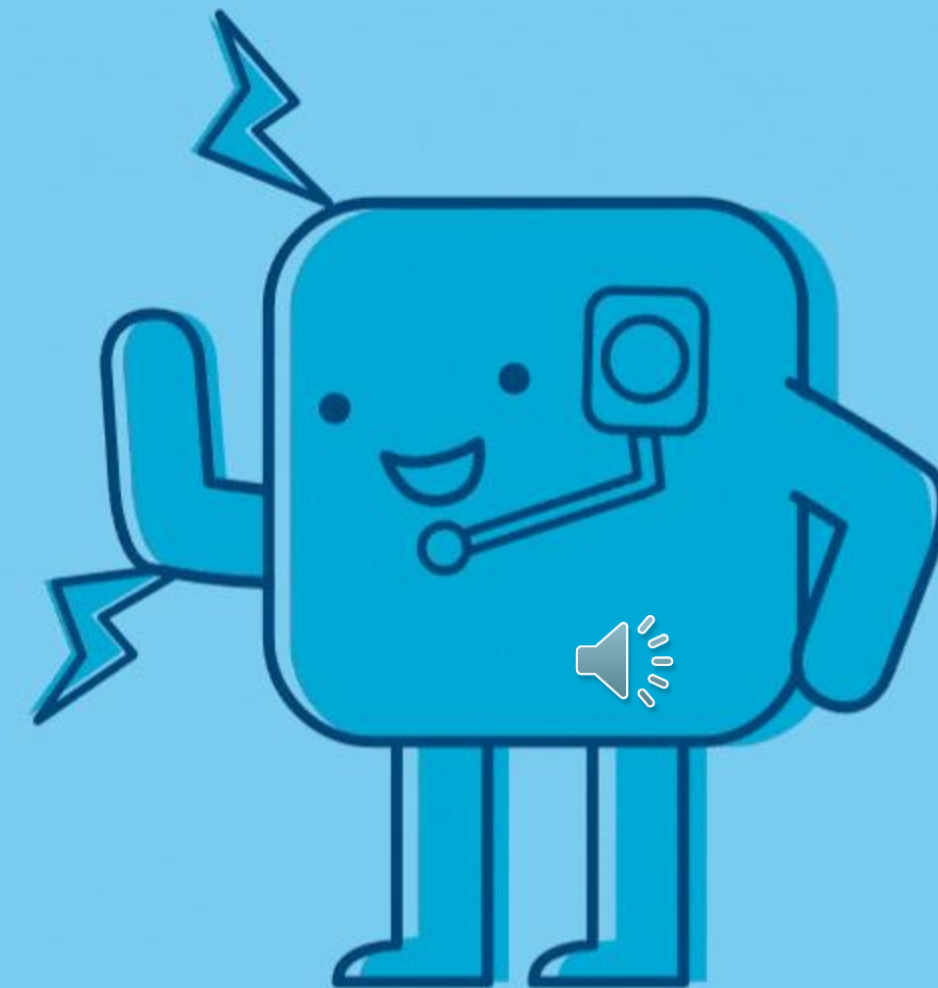
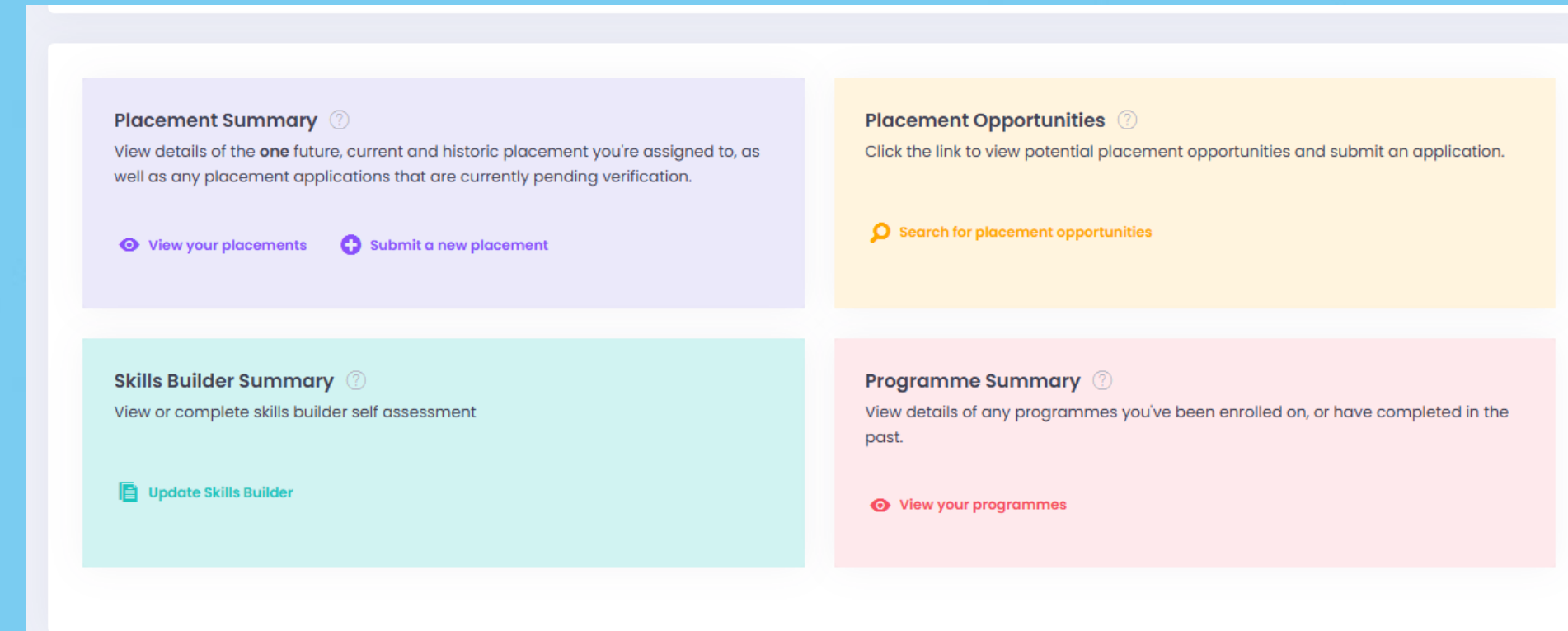


Step 1: Access the Portal



The Portal link will be sent to your school email.

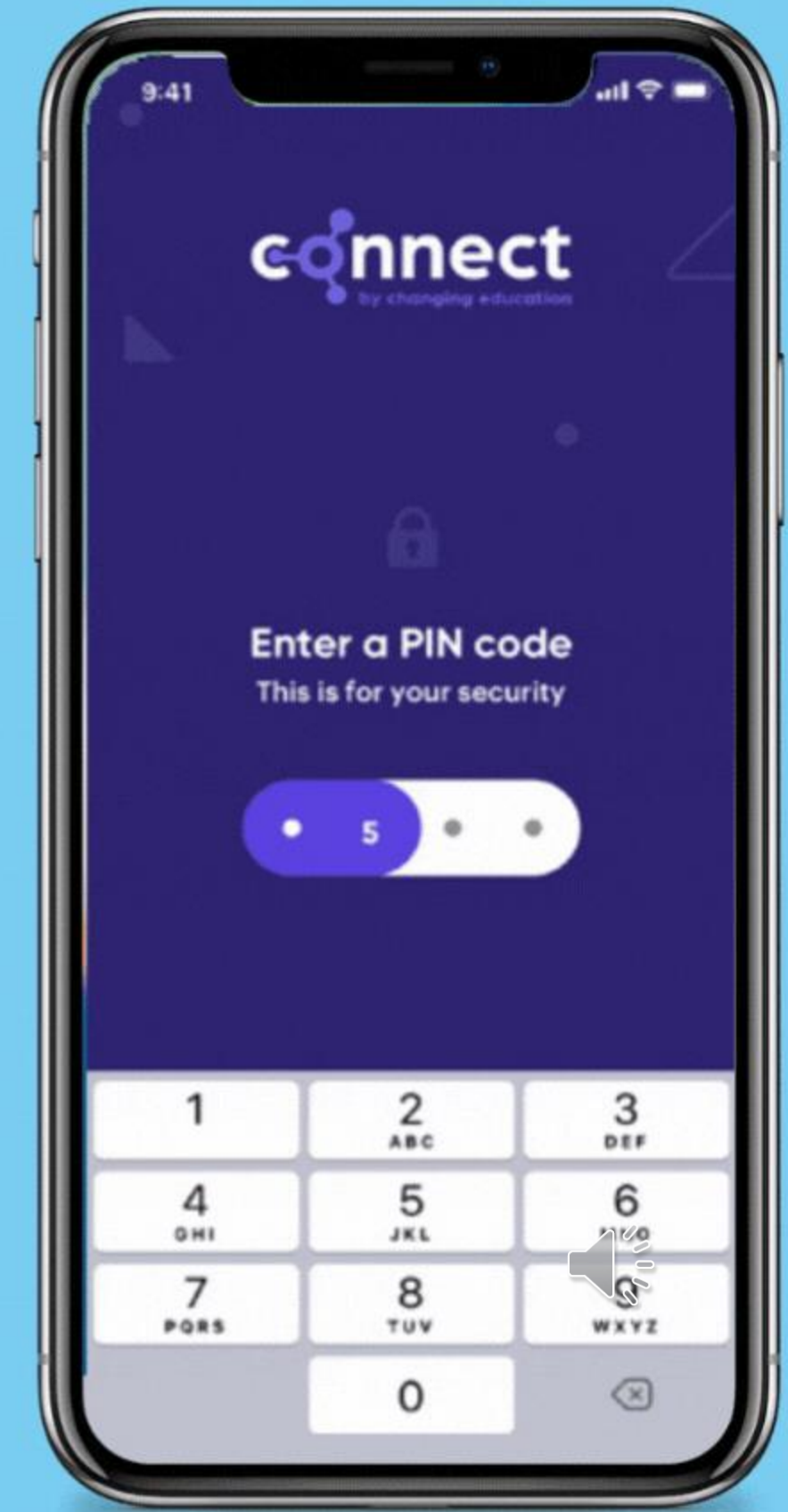
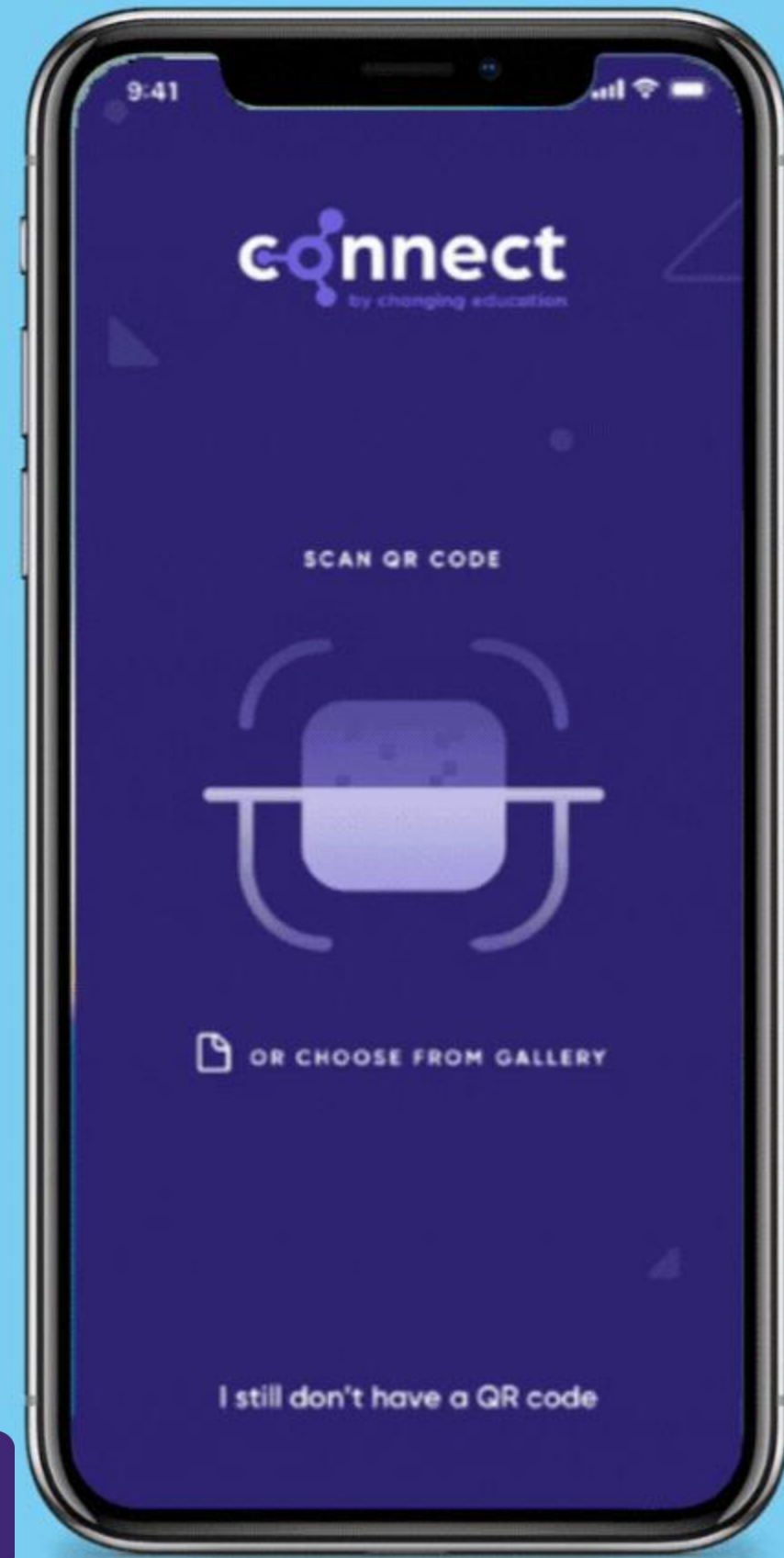
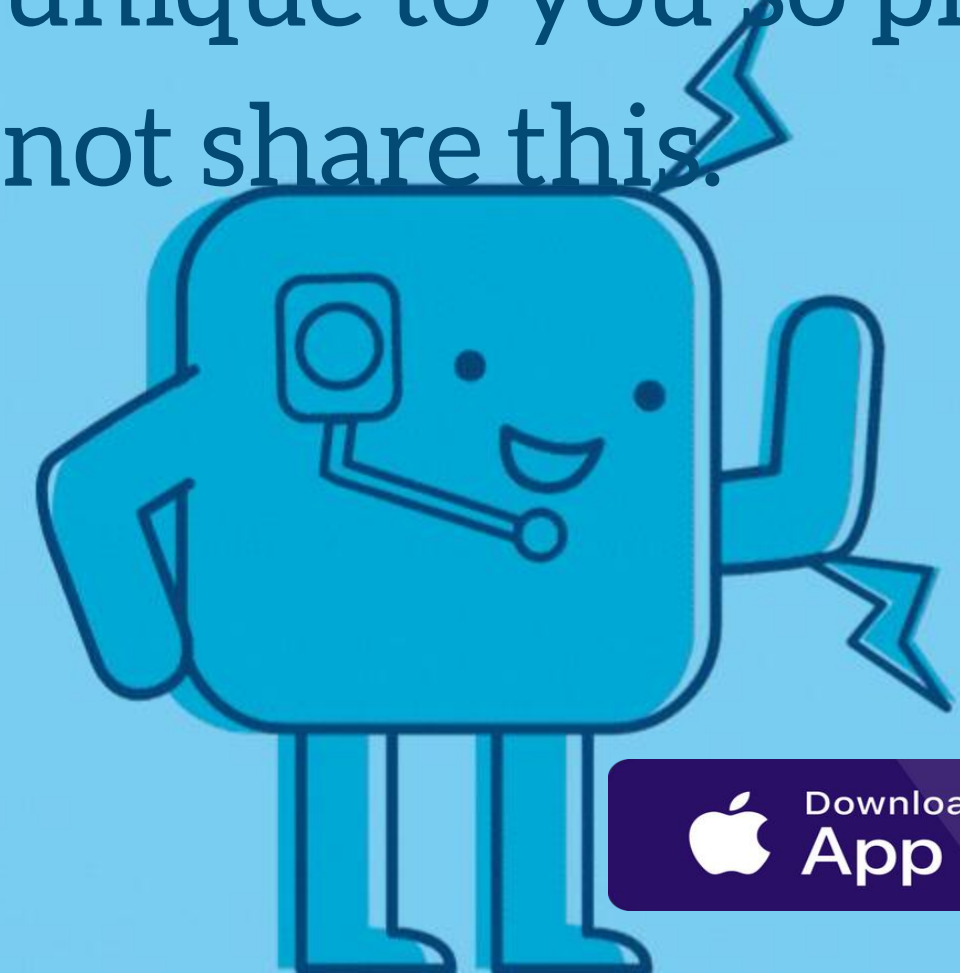
This link is unique to you, so please do not share with anyone. You can then start adding your placement details, this can only be accessed on a computer.



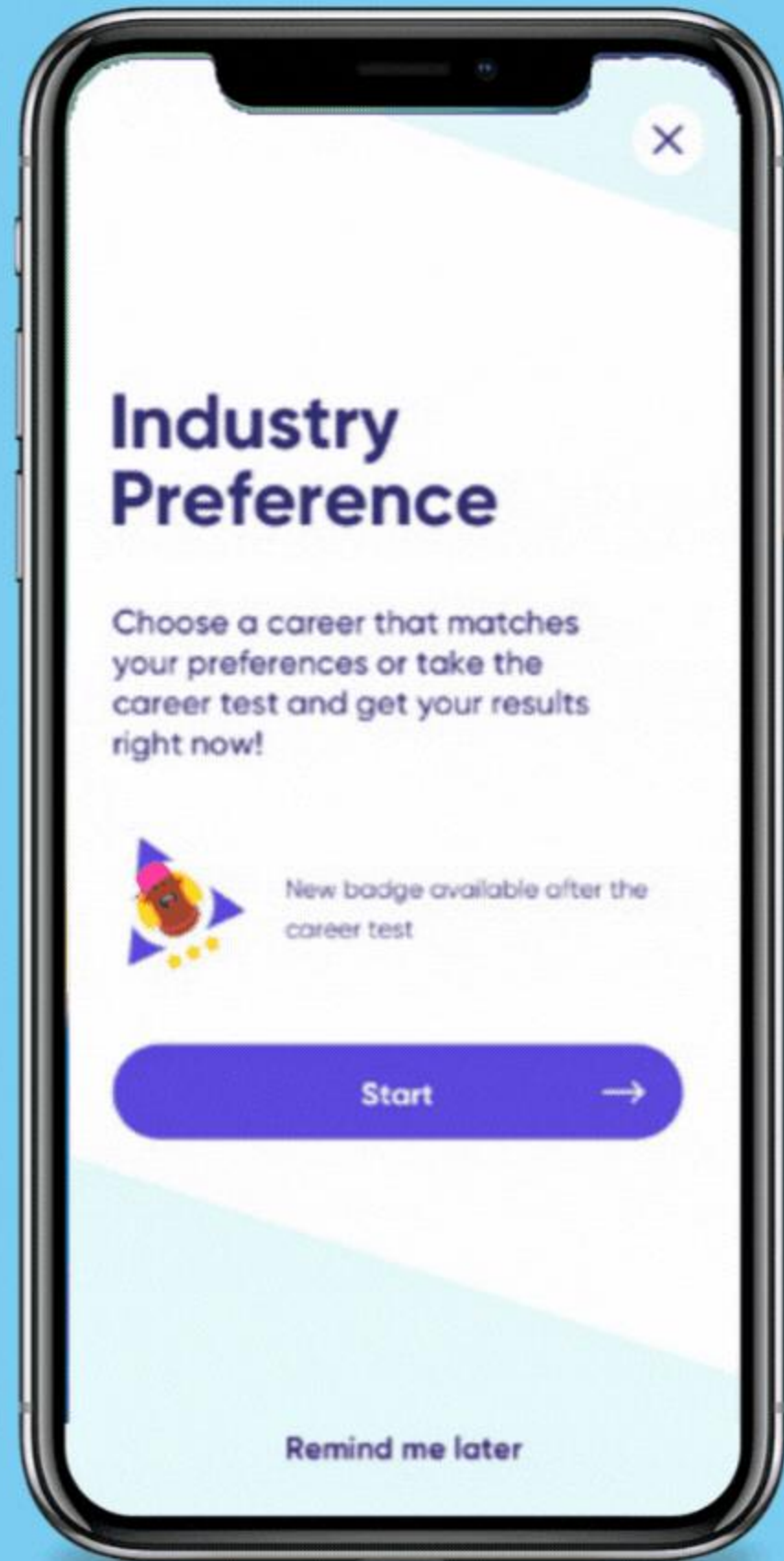
Step 2: Download App



There is an app available, this can be used when you are at home. Please scan the QR code which will be in your email, this QR code is unique to you so please do not share this.

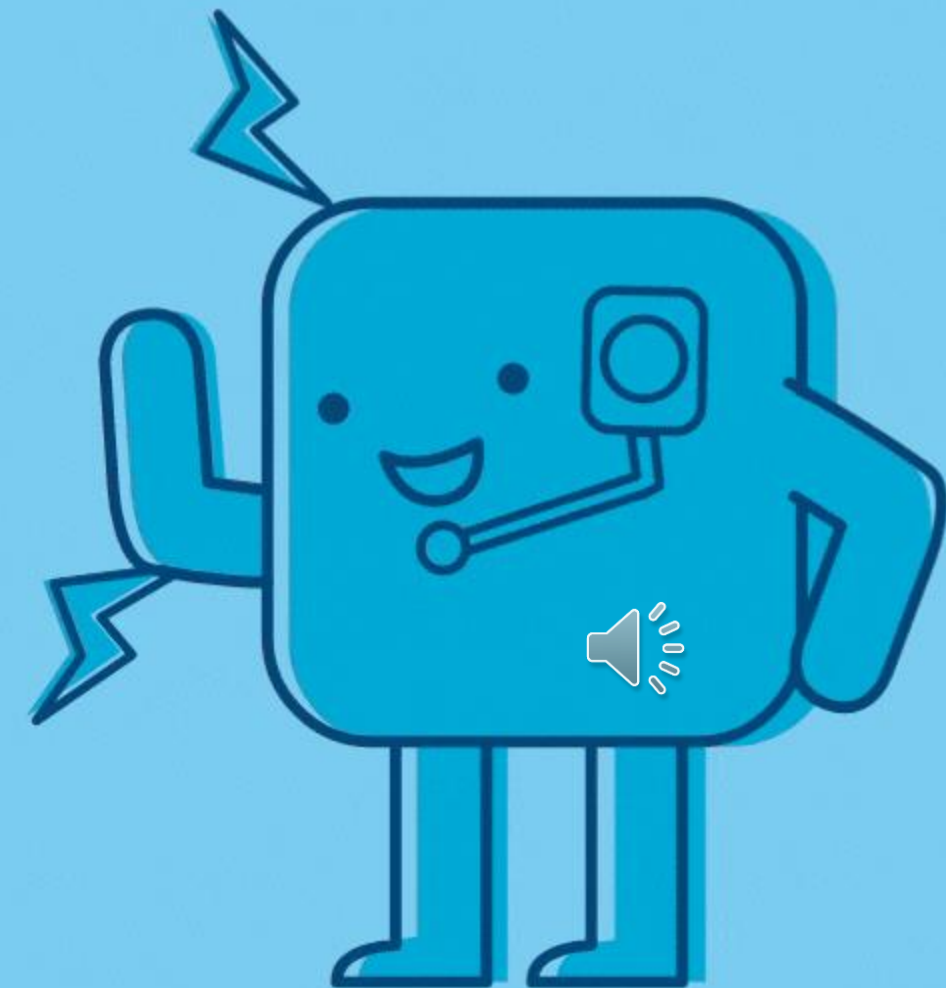


Step 3: Select your industry preference



We prompt you to input your industry preferences to help school understand the career paths you are considering.

It is also helpful for you to log your industry preferences during the pre-placement phase to reflect back on post-placement to see if your preferences have changed or remained the same.

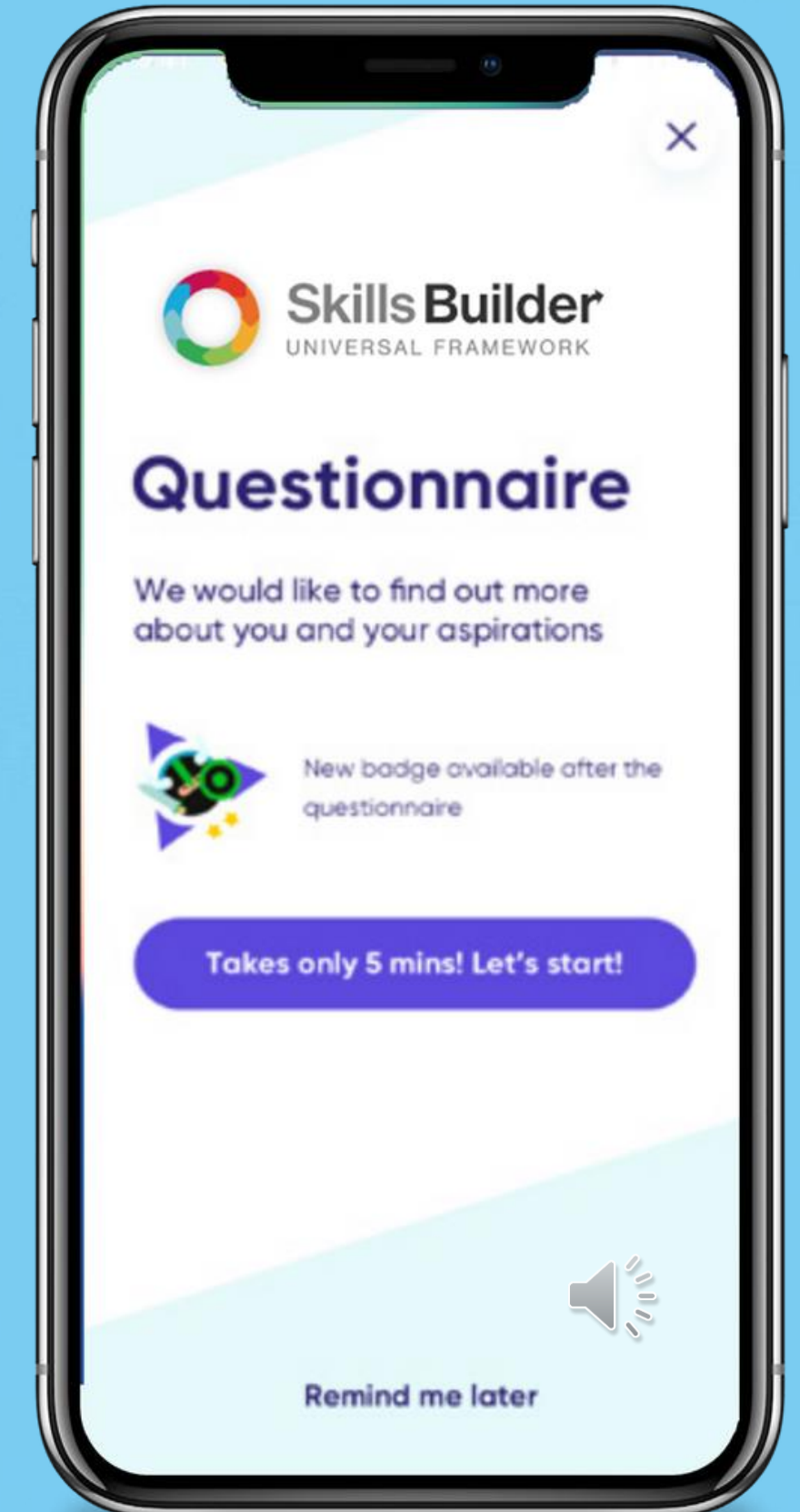
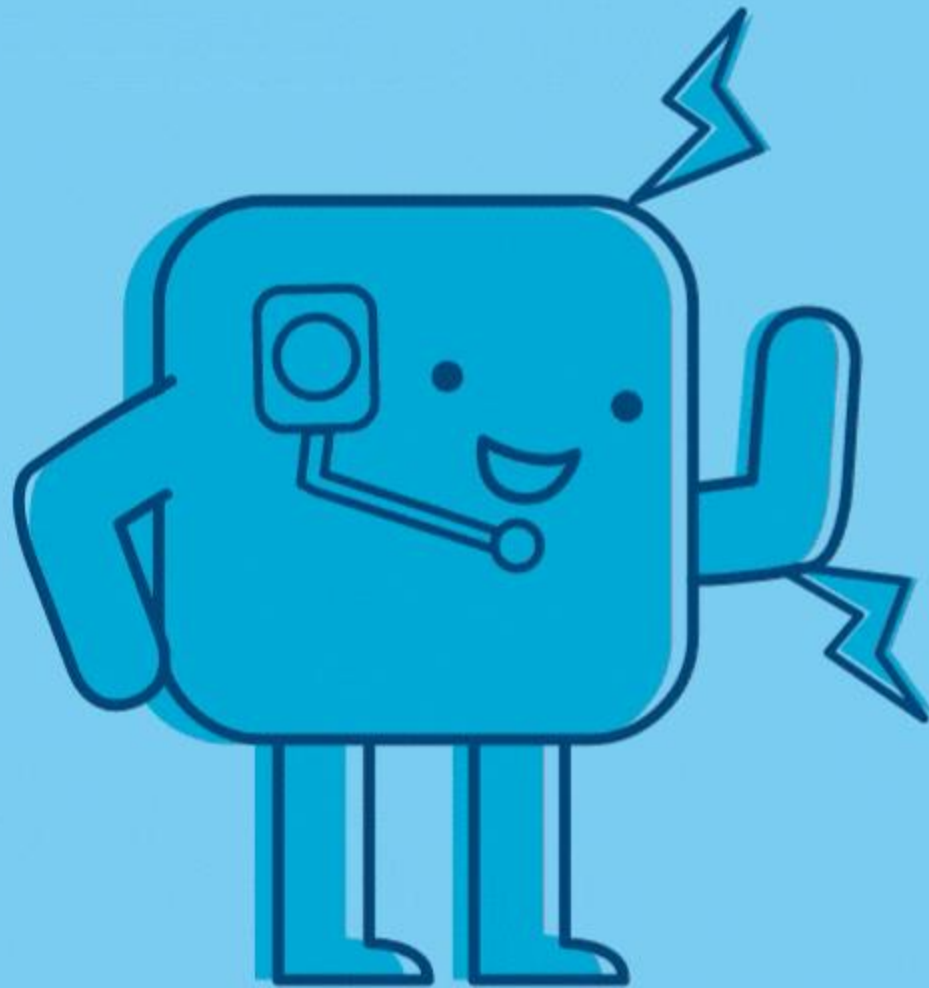


Step 4: Skills Builder

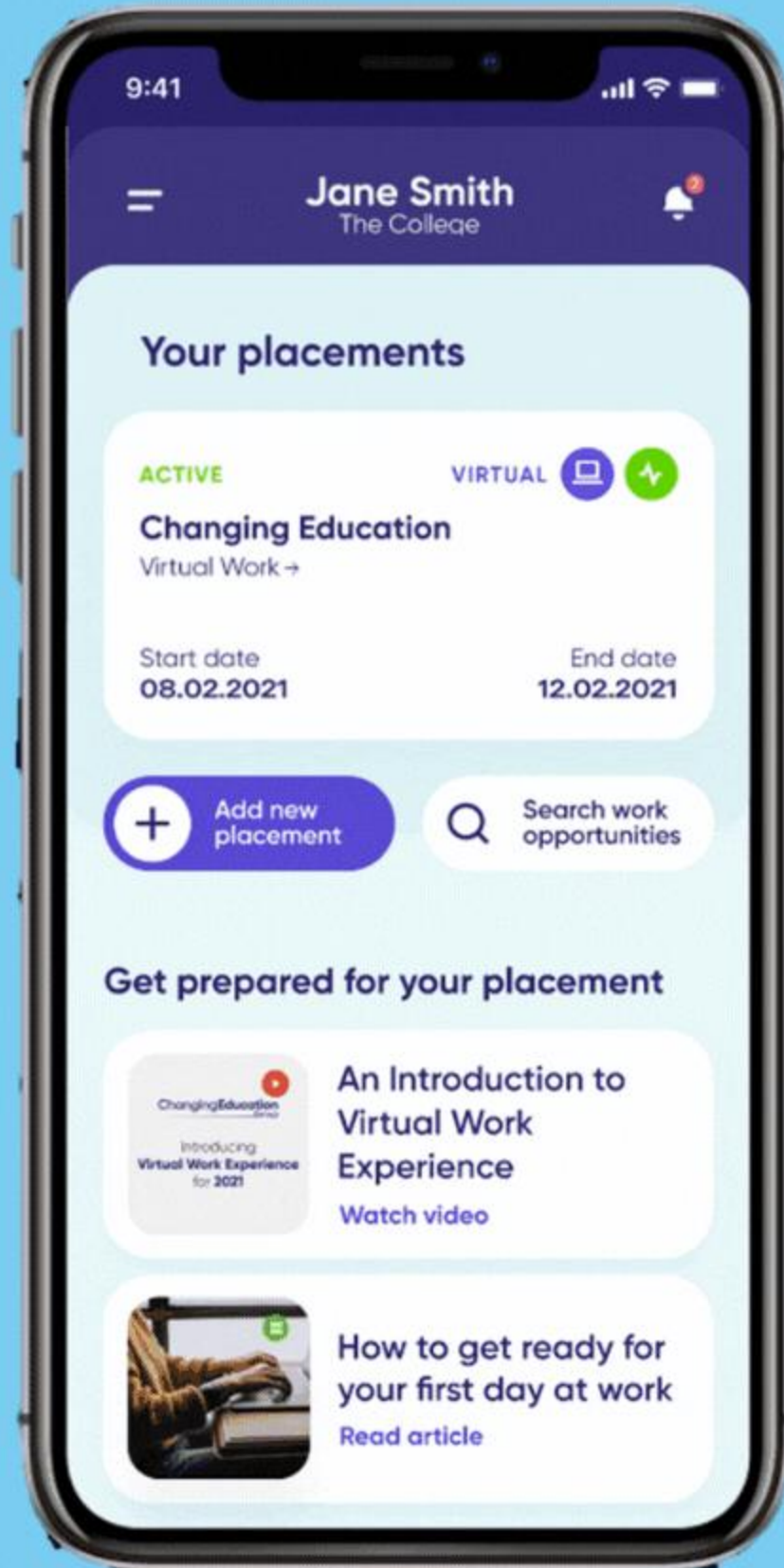


Our new Skills Builder tool will allow you to develop and reflect on your skills as an individual.

This is a key part in preparing you for your work placement as this tool will give you building blocks to improve your listening, speaking, problem solving, team working and many more skills before your placement starts.

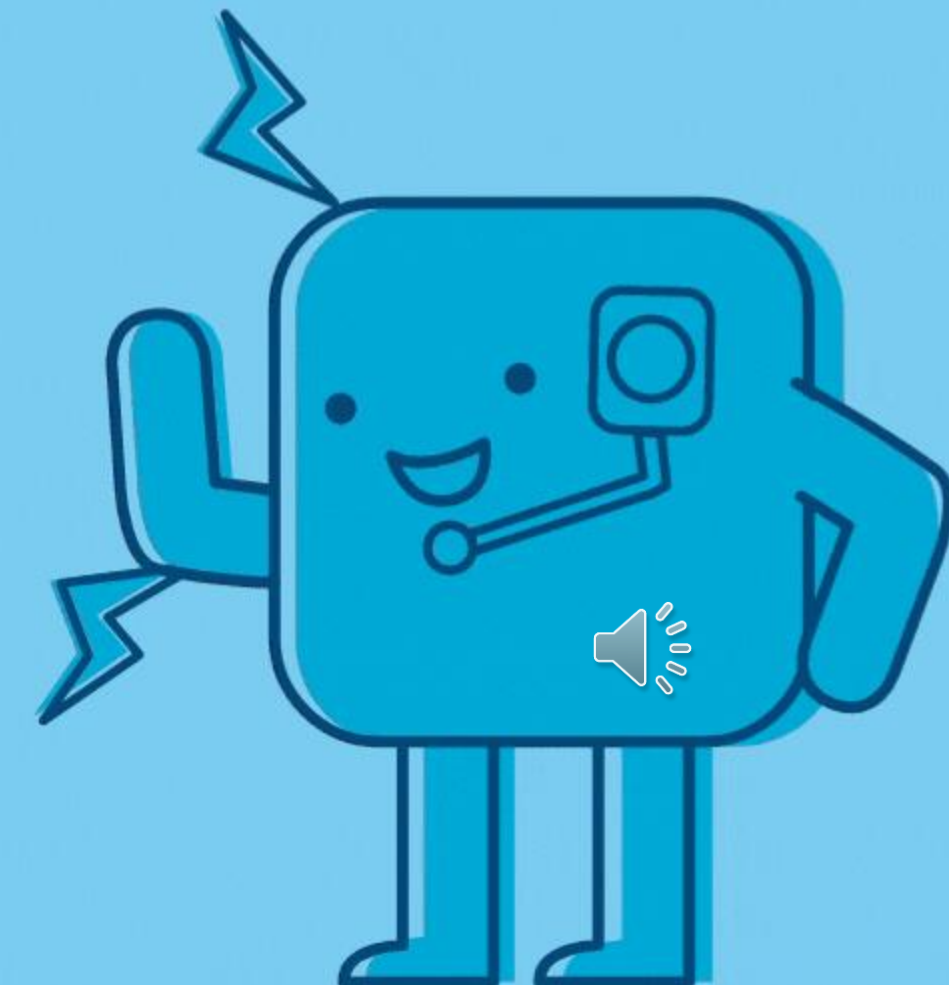


Step 5: Inputting your placement



Once you have found your own placement you will need to input the employer details into the app so that we can help the employer complete the risk assessment process.

You will need to input your self-found placement on the app at least 3 months before your placement start date.

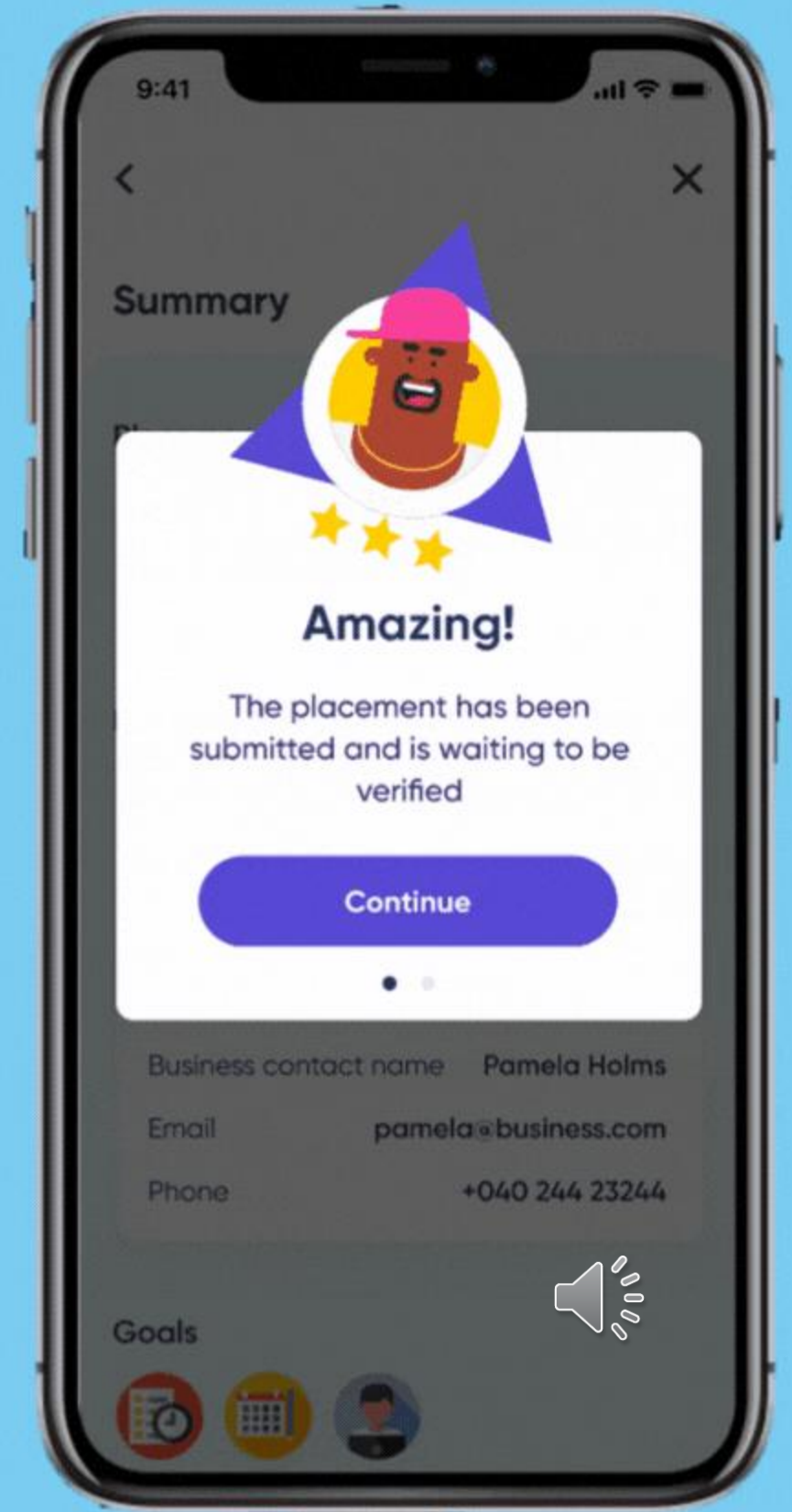
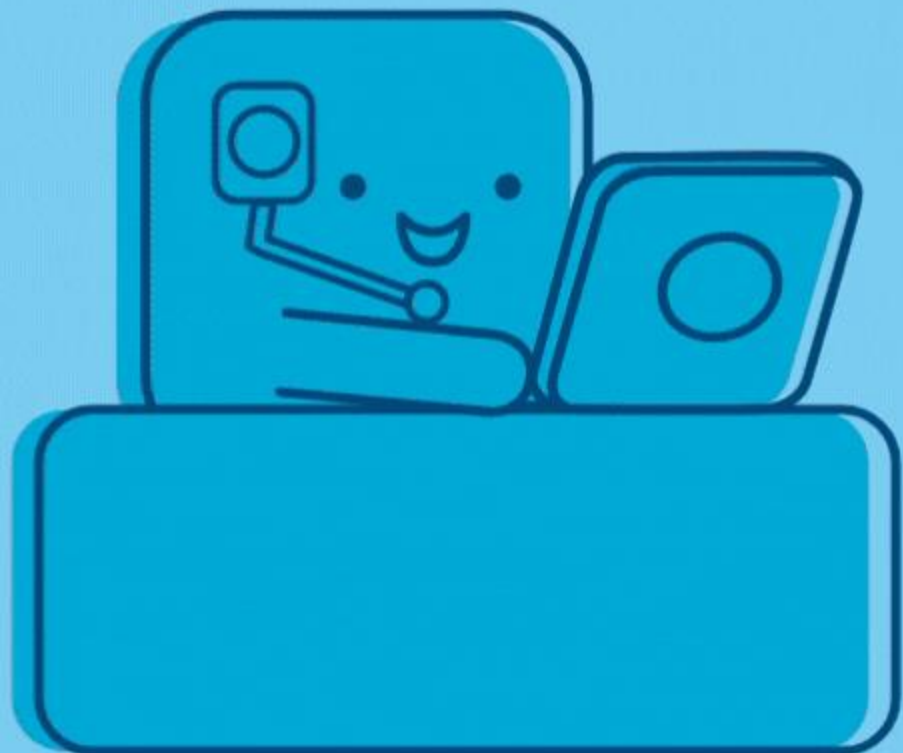


Step 6: Placement Verification



The teacher or staff member in charge of work experience at your school will then verify or deny your placement based on whether they are satisfied with your chosen employer and their details.

If your placement is denied, there will be a comment from your school contact telling you why your placement is not suitable to go ahead.



Any Questions?

